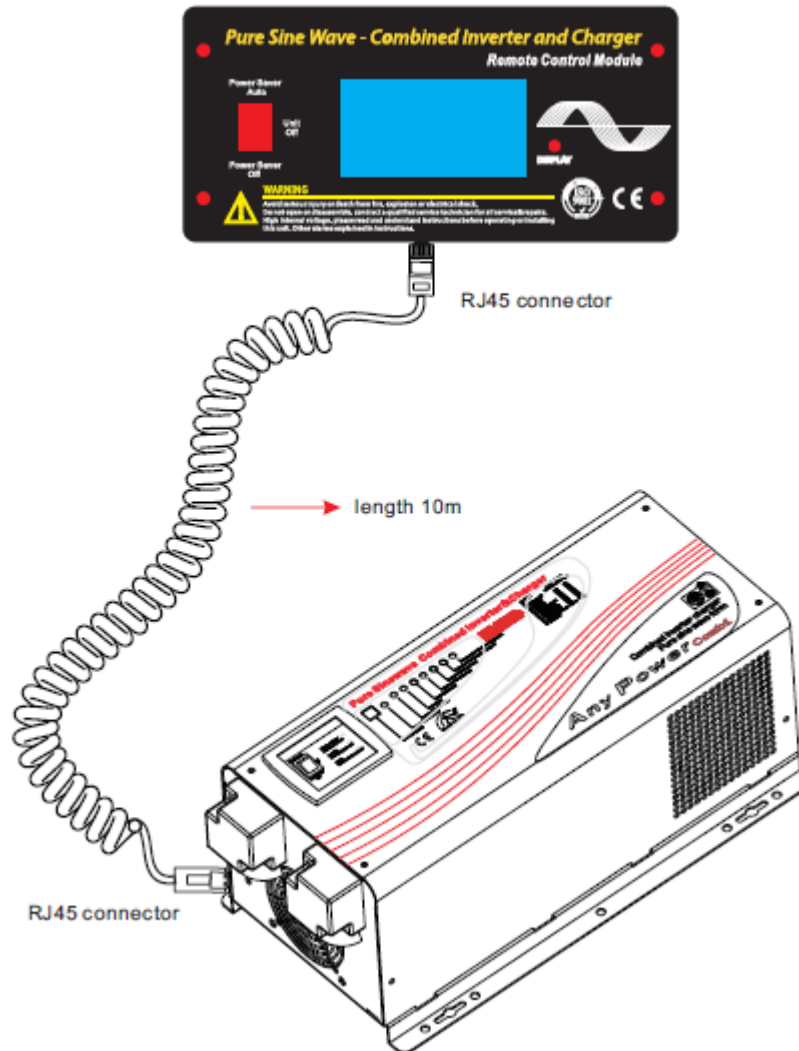


First: Connect the LCD remote panel to the RJ45 port of the inverter



Pure Sine Wave - Combined Inverter and Charger Remote Control Module

Power Saver
Auto



Unit
Off

Power Saver
Off

SYSTEM OVERVIEW

Input AC: 000 V	Output AC: 121 V
Batt DC: 12.0 V	Output Freq: 60.0Hz
Output Load: 000%	Work mode: Inverter
Alarm: NO	
Fault: NO	



DISPLAY



WARNING

Avoid serious injury or death from fire, explosion or electrical shock. Do not open or disassemble, contract a qualified service technician for all service&repairs. High internal voltage, please read and understand instructions before operating or installing this unit. Other alarms explained in instructions.



812-00159-01

Pure Sine Wave Form Inverter & Charger



MODE NO.: PS W7 3012
DC INPUT: 12VDC
AC INPUT: 120VAC 60Hz 30Amax 1p
AC OUTPUT: 120VAC 60Hz 3000W max 1p



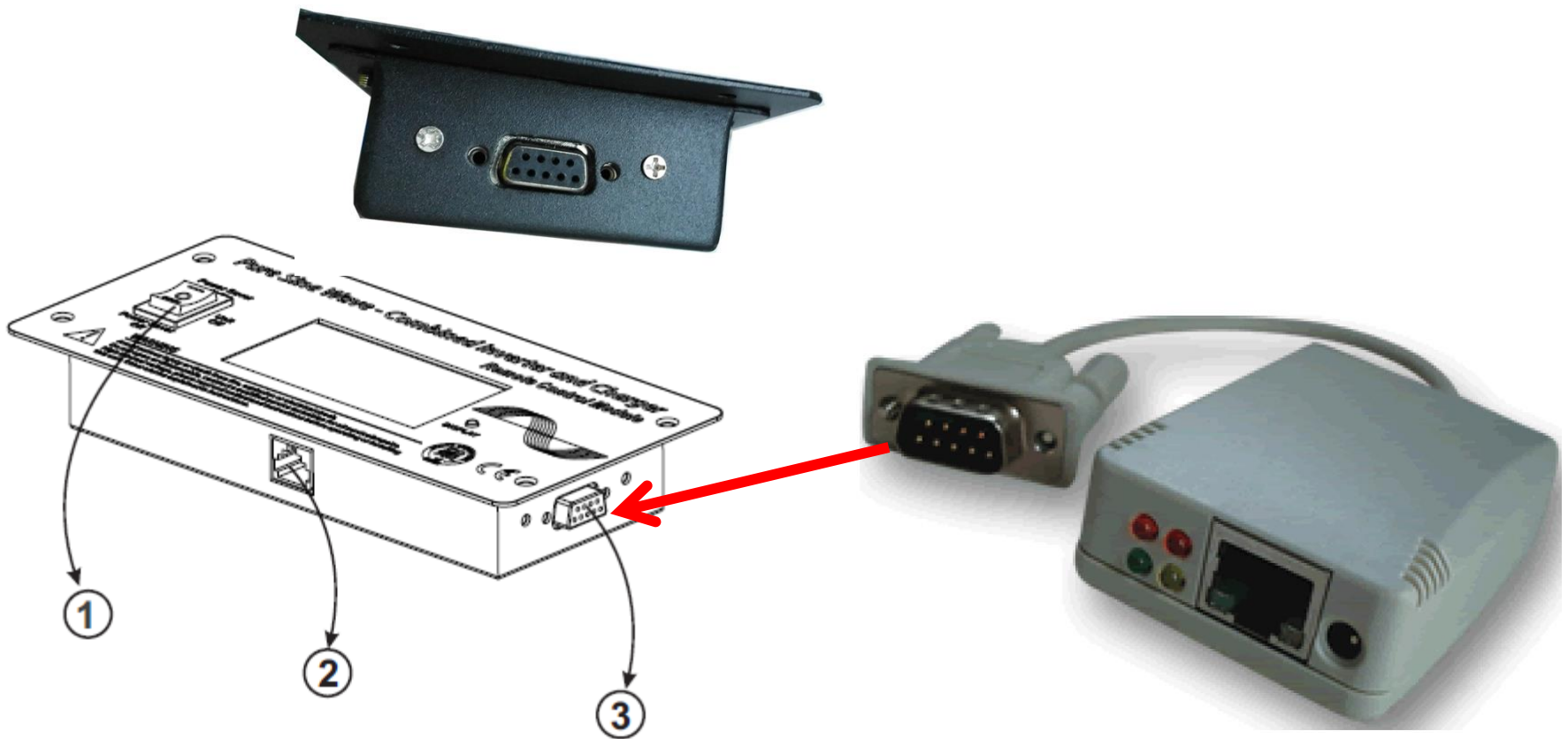
8200101160001

CAUTION:

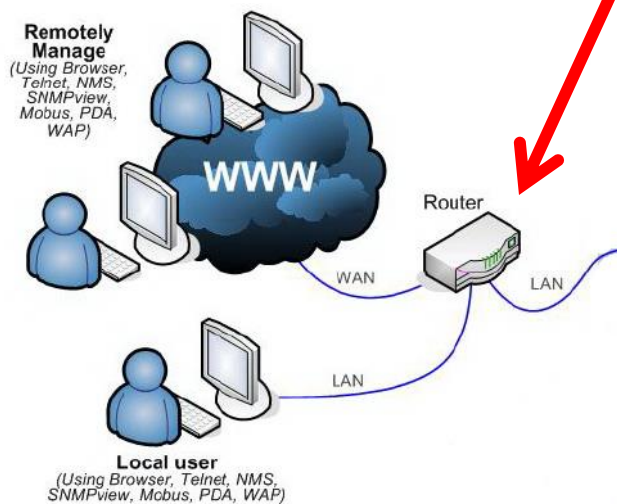
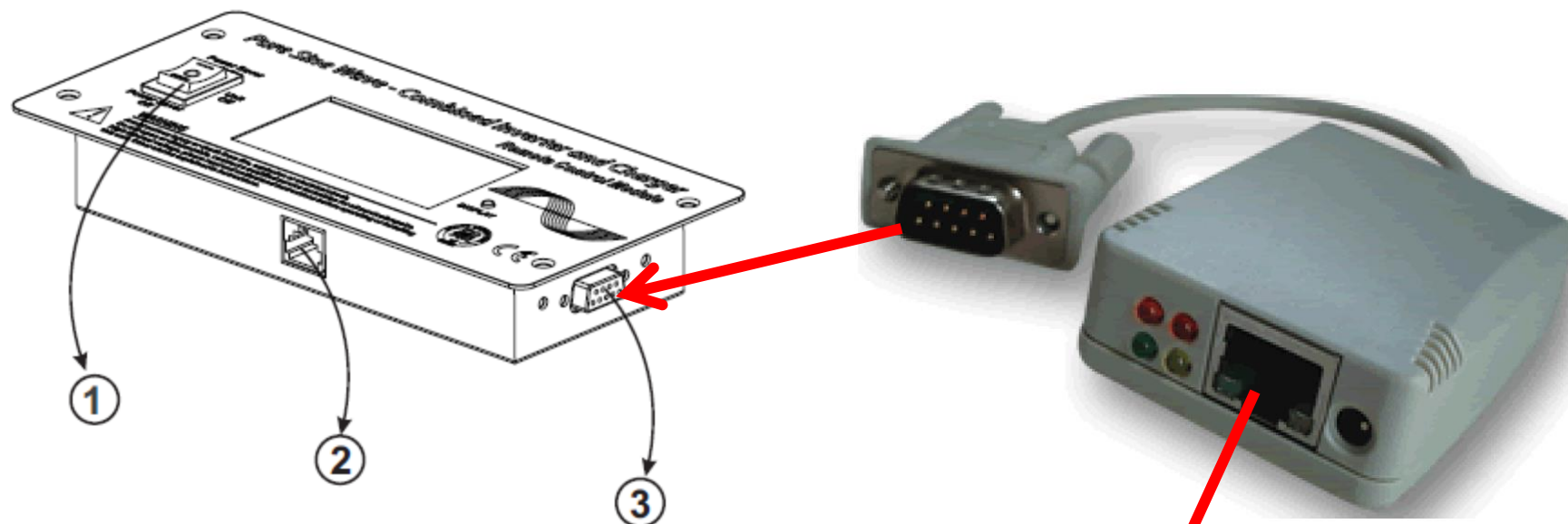
Risk of electric shock, Do not remove cover. No user serviceable parts inside. Refer servicing to qualified service personnel. To reduce risk of electric shock, do not expose to rain or spray. To prevent fire, do not obstruct ventilation.



Second: Connect the RS232 port on the DP522 SNMP card to the RS232 port on LCD remote side .



Third: Connect DP522 SNMP card to LAN.



Four: Install the Netility V4.53 software on computer and start remote monitoring. The SNMP card is only capable of monitoring, it can't power on or off the inverter.

